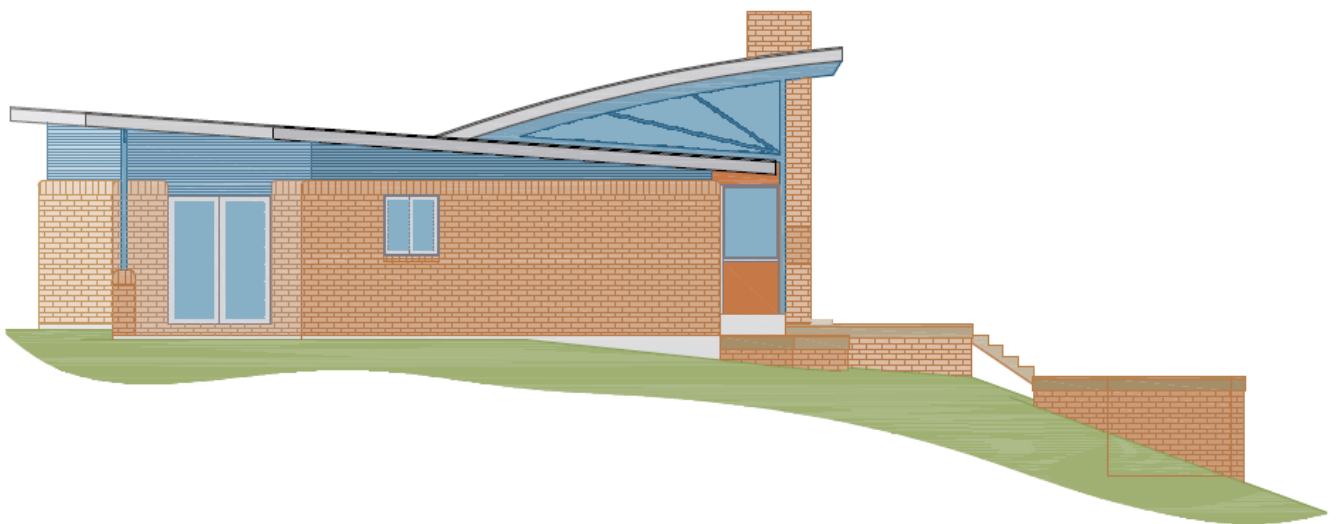




**Consulting Pty Ltd**



**Engineering - Planning - Development - Building Design**

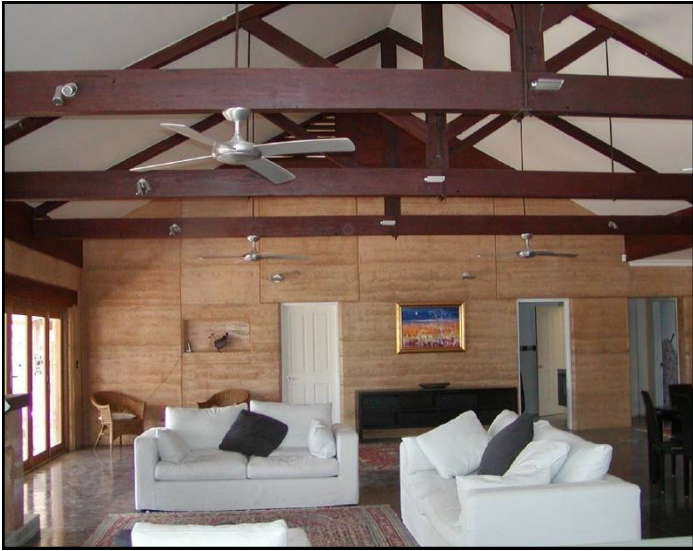
**65 Smith St, Kempsey (next to Woolworths carpark)**

**P.O. Box 183, West Kempsey, NSW 2440**

**Phone: 02 6562 7139 Mobile: 0438 627 140 Fax: 02 6563 1471**

**[www.dexconsulting.com.au](http://www.dexconsulting.com.au)**

## Engineering and Building design

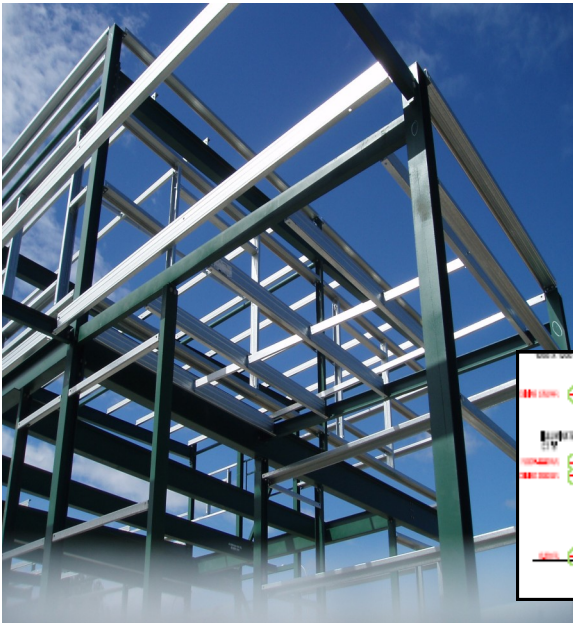
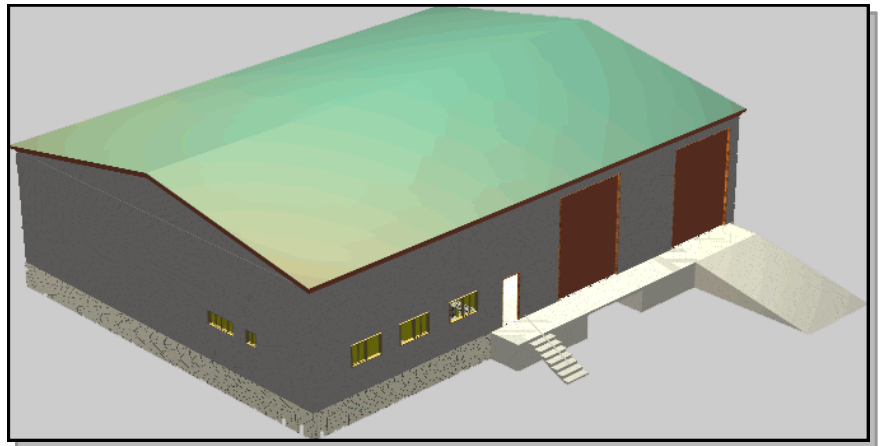


Above: DEX Consulting can take care of all your construction needs from **building design & Council approval to project management**. This is an example of an **energy efficient residence** designed and project managed by Mike Dutton.

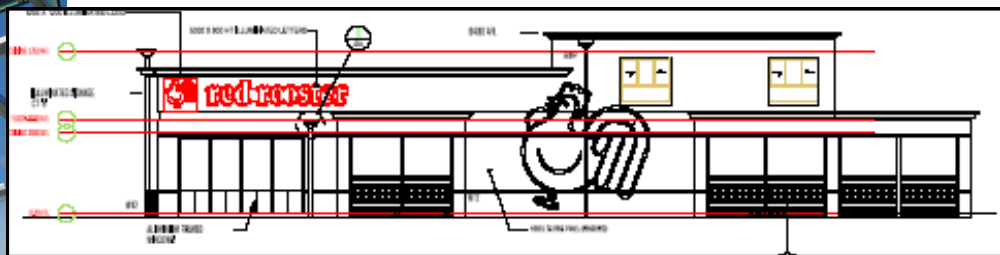
Below: One of our engineers assesses a bridge for structural adequacy.



Below: An industrial shed designed by DEX Consulting.



Left & Below: We obtained approval for the Kempsey Red Rooster building including **construction & structural engineering details, flood protection measures and liaising with the local traffic committee & RTA**.



**DEX Consulting Pty Ltd**

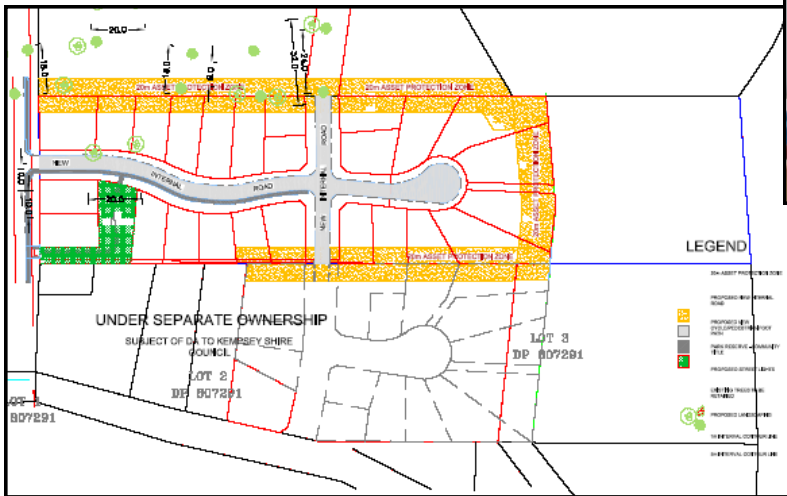
Ph: 02 6562 7139 | Fax: 02 6563 1471

Email : [mike@dexconsulting.com.au](mailto:mike@dexconsulting.com.au)

PO Box 183 West Kempsey 2440

## Planning and Development

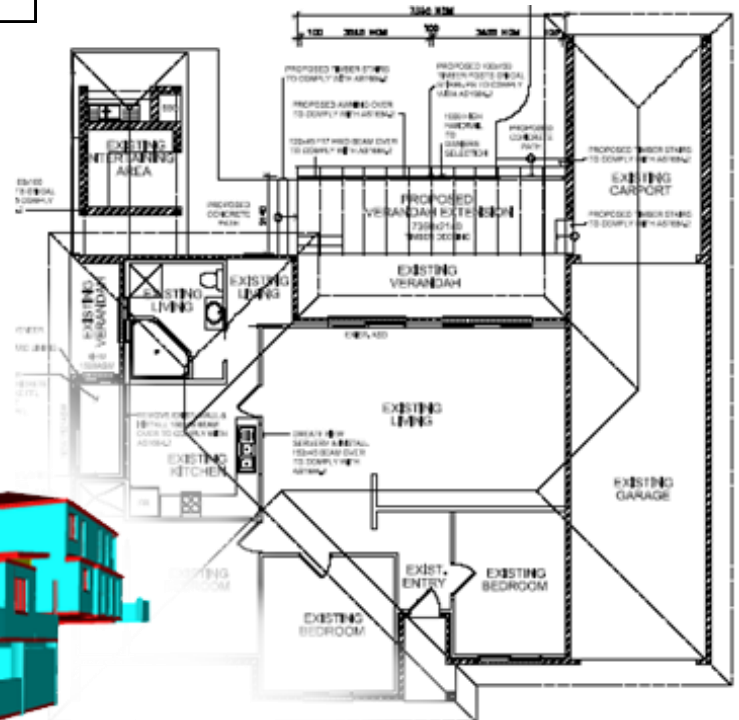
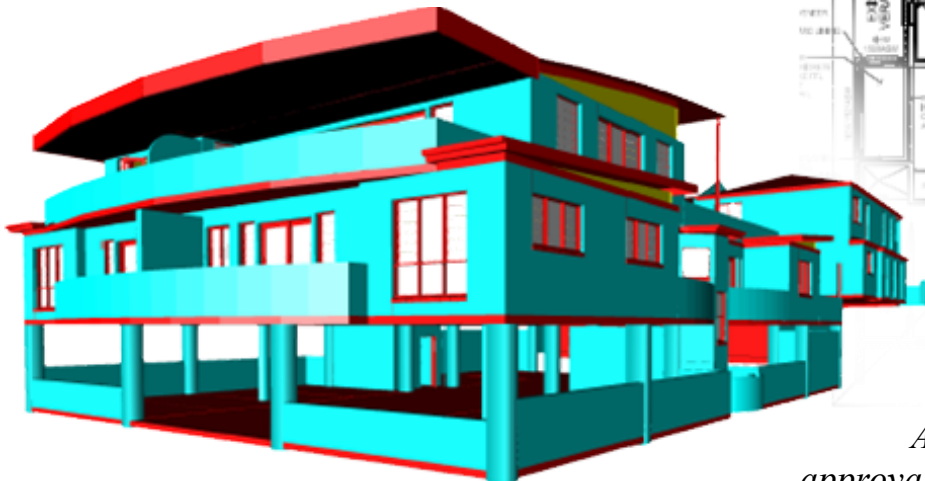
*Right: Approval for the Kempsey Toyota renovations was a complicated process involving **flooding issues** and a large **specialist advocacy** role for DEX Consulting. We designed, obtained approval and supervised construction of the project.*



*Left: DEX Consulting can design & obtain approval for **subdivisions, large and small**. We have experience with all Council codes & policies and State Government approval processes.*

*For more information see our webpage [www.dexconsulting.com.au](http://www.dexconsulting.com.au)*

*Below: We have the proven ability to undertake **large projects** such as apartment buildings & commercial project management.*



*Above: We frequently design & obtain approval for **house extensions & alterations**.*